

Monitoring

Features and Benefits

- Lower maintenance costs related to equipment monitored and/or controlled by SM IO
- Higher availability thanks to remote monitoring and control of site equipment

Description

The Supervision Module for generic monitoring provides detailed information and alarms regarding the condition and status of auxiliary equipment such as climate units or building alarms. Based on this information, site visits and maintenance related to the auxiliary units can be optimized to save both time and money, especially for sites located remotely.

The SM IO is an easy-to-install monitoring device connected to the advanced control unit (ACU) of the DC power system, and the auxiliary units it supervises. It is designed mainly for measuring alarms, voltages and temperatures.

The information and alarms, regarding the auxiliary units on a specific site, can be monitored or checked by means of a simple web browser or specific management software. No additional software is needed and the web browser login to monitor the site is password protected. (Examples of alarms provided by means of the control unit of the power system is specified in the datasheet and/or manual for the specific unit.)



SM IO – EnergyMaster™

SM IO – EnergyMaster™

Technical Specifications, SM IO

General

Power Supply	18-60 VDC
Power Consumption	4W
Temperature Range	0°C to +60°C / 32°F to +140°F
EMC	EN 300 386 class B, FCC part 15 class B
Safety	IEC 60950, EN 60950, UL 60950
Approvals	CE, UL and designed to meet NEBS level 3

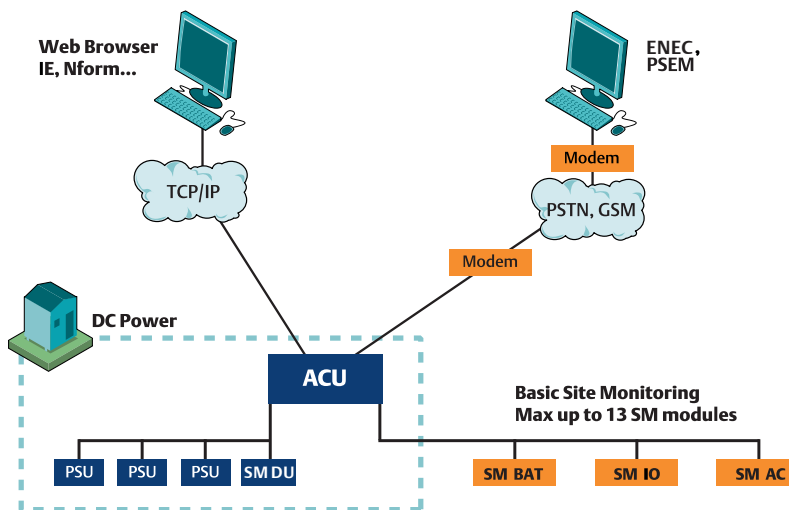
Mechanical Data

Dimensions (H × W × D)	150 × 300 × 43 mm / 5.9 × 11.8 × 1.7 inch
Standard Installation Methods	Rack and wall mounted
Weight	< 2 kg / 4.4 lbs

Inputs/Outputs

External Communication	RS232 / RS485
Inputs	
7 Digital / Analog Inputs	0-10VDC, 0-20mA configurable by jumpers
5 Analog Inputs	0-75 VDC, 0-20mA, 0-100mV, 1uA/K configurable by jumpers
1 AC Frequency	40-60 Hz (1.5-15V RMS)
Outputs	
3 Relay Outputs	24VDC / 250VAC, 5A

System Layout



ABBREVIATIONS

PSTN	Public Switched Telephone Network, an ordinary telephone line
IE	Internet Explorer
ENEC	EnergyMaster™ Emerson Network Energy Center, multi-platform, multi-user, distributed multi-language web environment for monitoring of Emerson Network Power DC, HPAC and UPS equipment
PSEM	Power Supply and Environment Monitoring system
ACU	Advanced Control Unit
PSU	Power Supply Unit (AC/DC converter/rectifier)
SM DU	Supervision Module for additional alarms in extension cabinets
SM AC	Supervision Module for Alternating Current
SM BAT	Supervision Module for Battery Backup
SM IO	Supervision Module for generic monitoring

Emerson Network Power.
The global leader in enabling
Business-Critical Continuity™.

■ AC Power
■ Connectivity
■ DC Power
■ Embedded Computing

■ Embedded Power
■ **Infrastructure Management & Monitoring**
■ Outside Plant
■ Power Switching & Controls

■ Precision Cooling
■ Racks & Integrated Cabinets
■ Services
■ Surge Protection

www.emersonnetworkpower.com
www.emersonnetworkpower.com/energysystems
www.DCpowerefficiency.com

Business-Critical Continuity, Emerson Network Power and the Emerson Network Power logo are trademarks and service marks of Emerson Electric Co.
©2010 Emerson Electric Co.